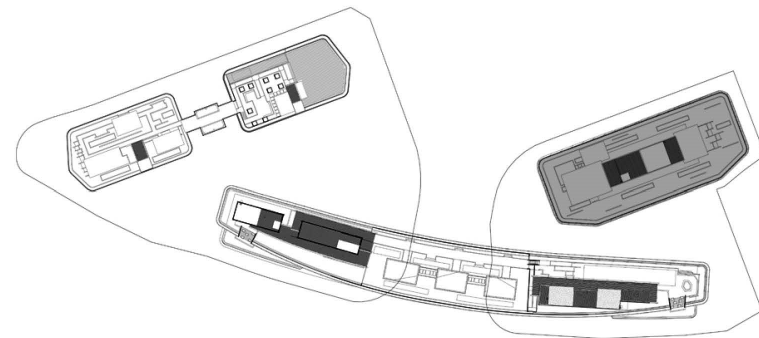
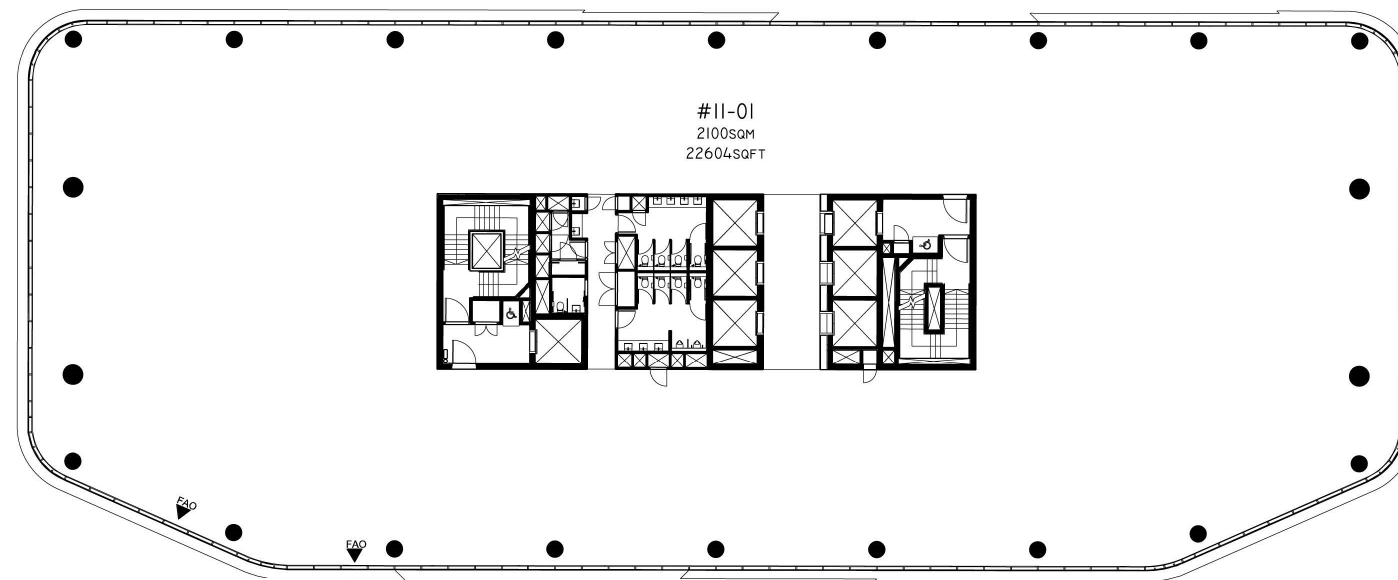


# TOWER 2 | 11TH STOREY

# woods square

OFFICE • SOLO • F&B • RETAIL • CHILDCARE



▲ FAO - FIRE ACCESS OPENING. THE AREA IN FRONT OF THE ACCESS OPENING SHOULD BE KEPT CLEAR.

The above plan is subject to changes as may be approved by the relevant authorities.

BP No.: A1608-00004-2014-BP01  
BP No.: A1608-00004-2014-BP02

Approved on: 31 December 2015  
Approved on: 16 June 2016

