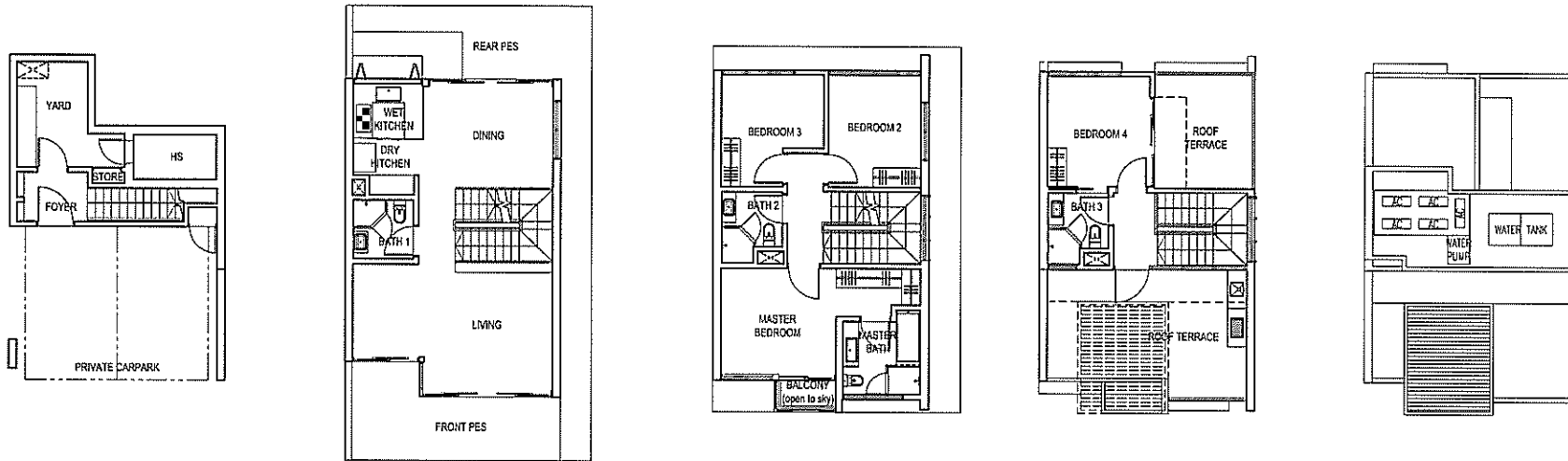


TYPE C5

UNIT NO - 54



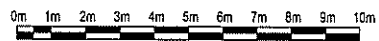
BASEMENT PLAN

1ST STOREY PLAN

2ND STOREY PLAN

3RD STOREY PLAN

ROOF PLAN



BP NO: A0779-00018-2012-BP-01

APPROVED ON: 12 AUGUST 2013

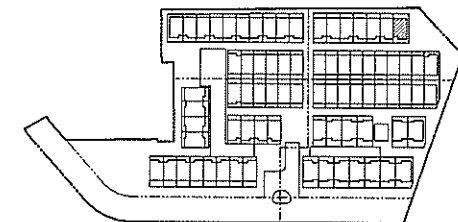
BP NO: A0779-00018-2012-BP-02

APPROVED ON: 21 AUGUST 2013

BP NO: A0779-00018-2012-BP-03

APPROVED ON: 20 MARCH 2015

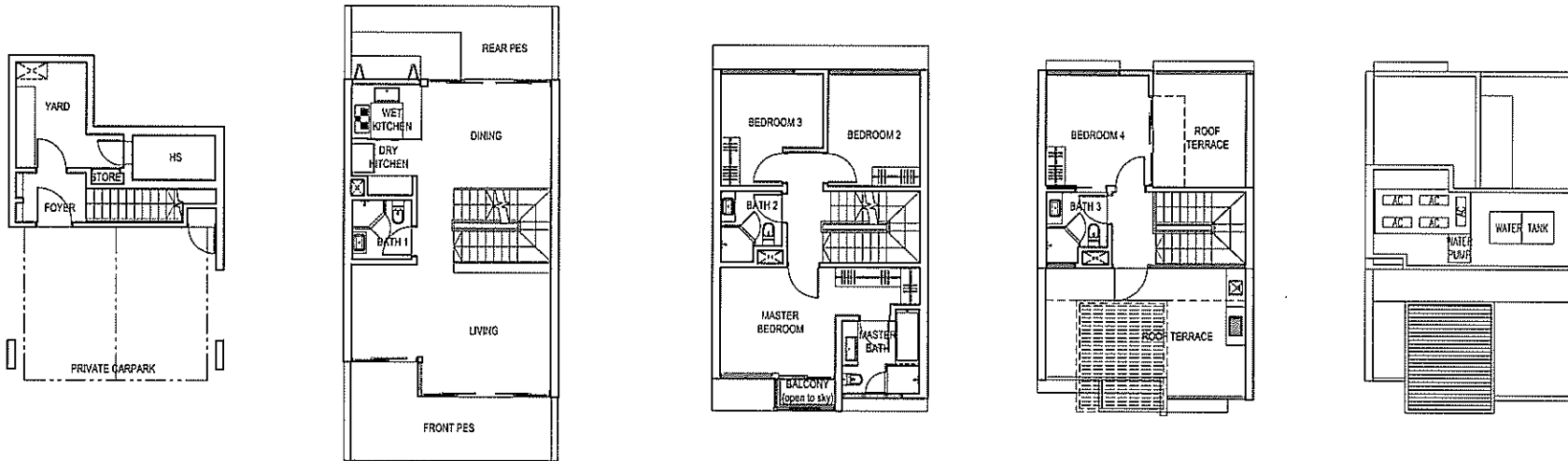
DISCLAIMER: THE ABOVE PLANS ARE SUBJECT TO CHANGE AS MAY BE APPROVED BY THE RELEVANT AUTHORITIES



KEY PLAN
NOT TO SCALE

TYPE C1d

UNIT NO - 56



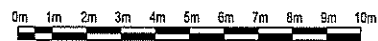
BASEMENT PLAN

1ST STOREY PLAN

2ND STOREY PLAN

3RD STOREY PLAN

ROOF PLAN



BP NO: A0779-00018-2012-BP-01

APPROVED ON: 12 AUGUST 2013

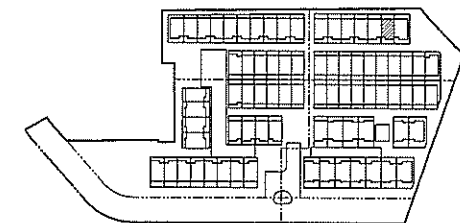
BP NO: A0779-00018-2012-BP-02

APPROVED ON: 21 AUGUST 2013

BP NO: A0779-00018-2012-BP-03

APPROVED ON: 20 MARCH 2015

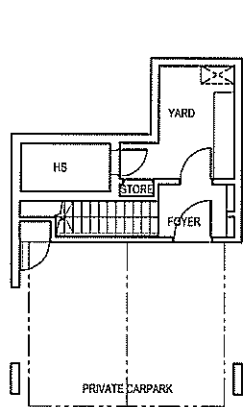
DISCLAIMER: THE ABOVE PLANS ARE SUBJECT TO CHANGE AS MAY BE APPROVED BY THE RELEVANT AUTHORITIES



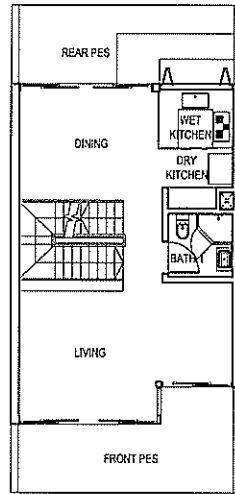
KEY PLAN
NOT TO SCALE

TYPE C1d(m)

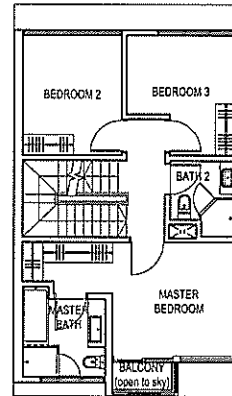
UNIT NO - 58



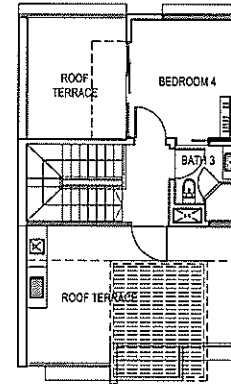
BASEMENT PLAN



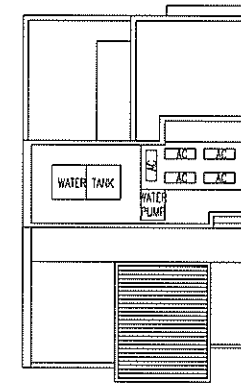
1ST STOREY PLAN



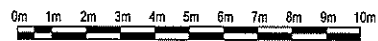
2ND STOREY PLAN



3RD STOREY PLAN



ROOF PLAN



BP NO: A0779-00018-2012-BP-01

APPROVED ON: 12 AUGUST 2013

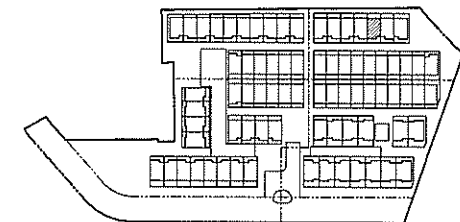
BP NO: A0779-00018-2012-BP-02

APPROVED ON: 21 AUGUST 2013

BP NO: A0779-00018-2012-BP-03

APPROVED ON: 20 MARCH 2015

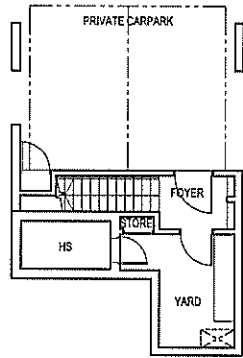
DISCLAIMER: THE ABOVE PLANS ARE SUBJECT TO CHANGE AS MAY BE APPROVED BY THE RELEVANT AUTHORITIES



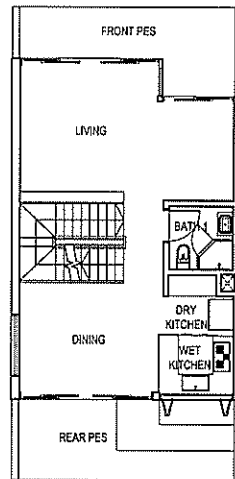
KEY PLAN
NOT TO SCALE

TYPE C2b

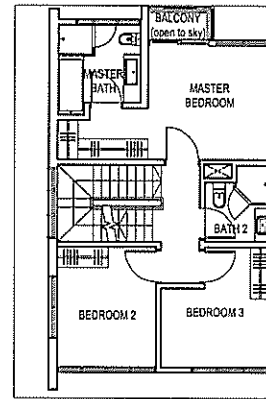
UNIT NO - 88



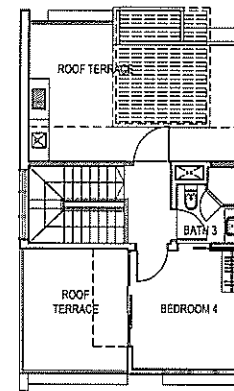
BASEMENT PLAN



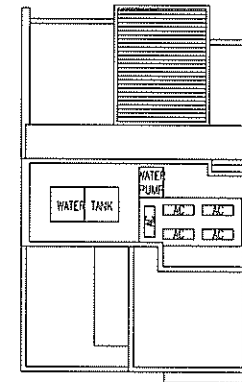
1ST STOREY PLAN



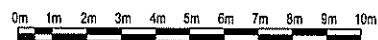
2ND STOREY PLAN



3RD STOREY PLAN



ROOF PLAN



BP NO: A0779-00018-2012-BP-01

BP NO: A0779-00018-2012-BP-02

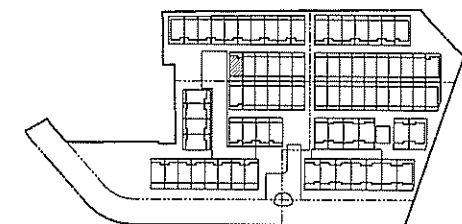
BP NO: A0779-00018-2012-BP-03

DISCLAIMER: THE ABOVE PLANS ARE SUBJECT TO CHANGE AS MAY BE APPROVED BY THE RELEVANT AUTHORITIES

APPROVED ON: 12 AUGUST 2013

APPROVED ON: 21 AUGUST 2013

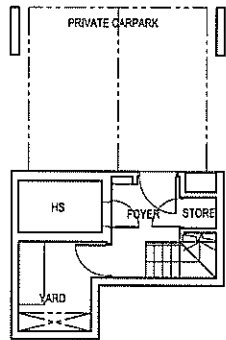
APPROVED ON: 20 MARCH 2015



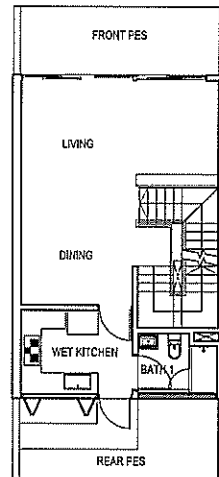
KEY PLAN
NOT TO SCALE

TYPE D1(m)

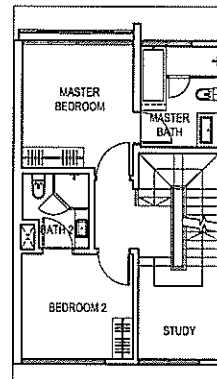
UNIT NO - 90



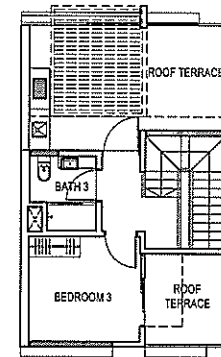
BASEMENT PLAN



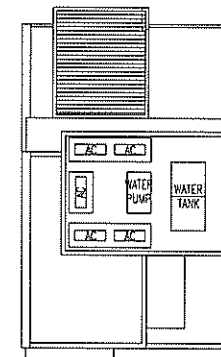
1ST STOREY PLAN



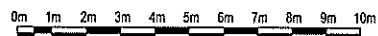
2ND STOREY PLAN



3RD STOREY PLAN



ROOF PLAN



BP NO: A0779-00018-2012-BP-01

APPROVED ON: 12 AUGUST 2013

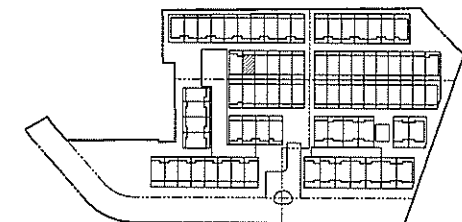
BP NO: A0779-00018-2012-BP-02

APPROVED ON: 21 AUGUST 2013

BP NO: A0779-00018-2012-BP-03

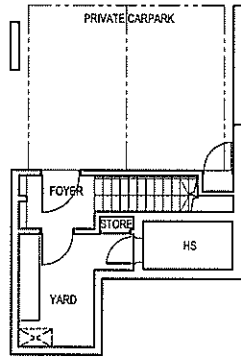
APPROVED ON: 20 MARCH 2015

DISCLAIMER: THE ABOVE PLANS ARE SUBJECT TO CHANGE AS MAY BE APPROVED BY THE RELEVANT AUTHORITIES

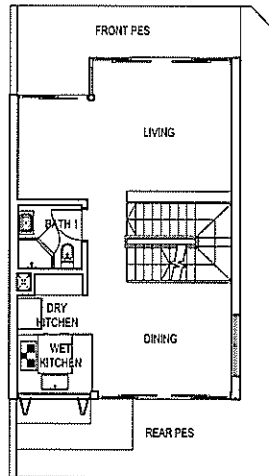


KEY PLAN
NOT TO SCALE

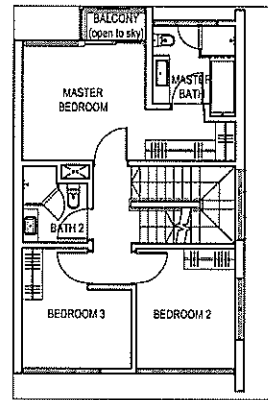
TYPE C4
UNIT NO - 118



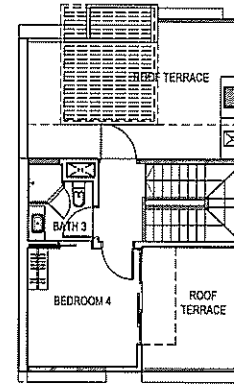
BASEMENT PLAN



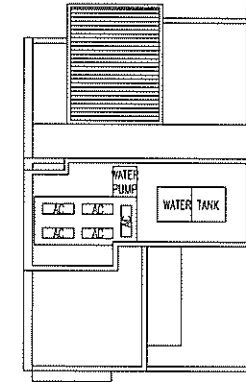
1ST STOREY PLAN



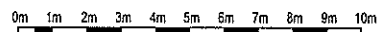
2ND STOREY PLAN



3RD STOREY PLAN



ROOF PLAN



BP NO: A0779-00018-2012-BP-01

BP NO: A0779-00018-2012-BP-02

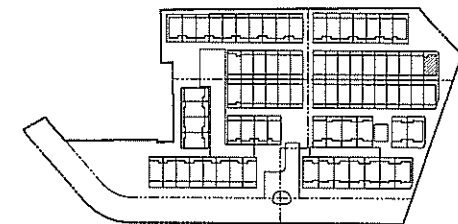
BP NO: A0779-00018-2012-BP-03

DISCLAIMER: THE ABOVE PLANS ARE SUBJECT TO CHANGE AS MAY BE APPROVED BY THE RELEVANT AUTHORITIES

APPROVED ON: 12 AUGUST 2013

APPROVED ON: 21 AUGUST 2013

APPROVED ON: 20 MARCH 2015

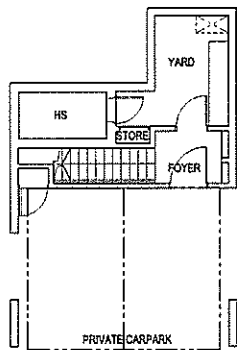


KEY PLAN
NOT TO SCALE

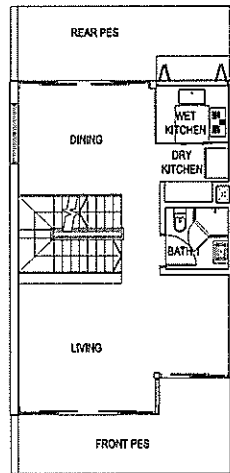
Alana

TYPE C2h(m)
UNIT NO - 152

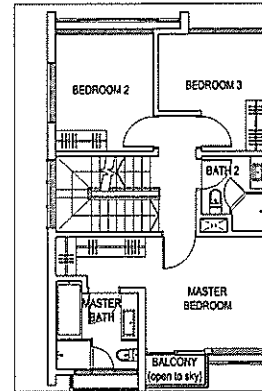
ANNEX B3



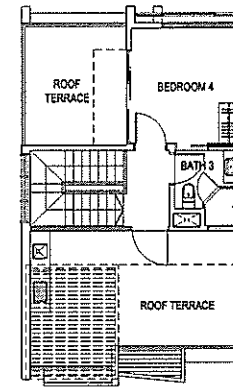
BASEMENT PLAN



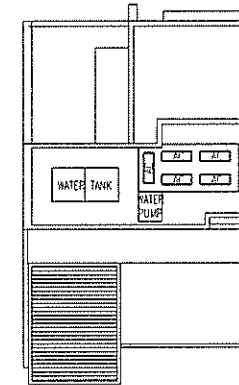
1ST STOREY PLAN



2ND STOREY PLAN



3RD STOREY PLAN



ROOF PLAN

RDC
ARCHITECTS
PTE LTD
MOHAN SHANMUGAM
152 BEACH ROAD, #14-08 GATEWAY EAST SINGAPORE 189721
E-MAIL: ARCHITECTS@RDCA.COM.SG WEBSITE: WWW.RDCA.COM.SG
TEL: 627 868 78 FAX: 627 877 27



BP NO: A0779-00018-2012-BP-01

BP NO: A0779-00018-2012-BP-02

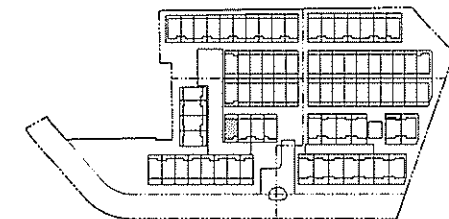
BP NO: A0779-00018-2012-BP-03

DISCLAIMER: THE ABOVE PLANS ARE SUBJECT TO CHANGE AS MAY BE APPROVED BY THE RELEVANT AUTHORITIES

APPROVED ON: 12 AUGUST 2013

APPROVED ON: 21 AUGUST 2013

APPROVED ON: 20 MARCH 2015



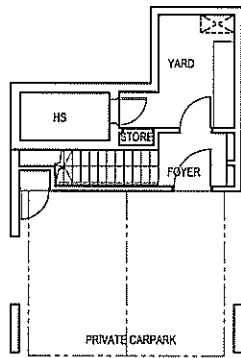
KEY PLAN
NOT TO SCALE

Alana

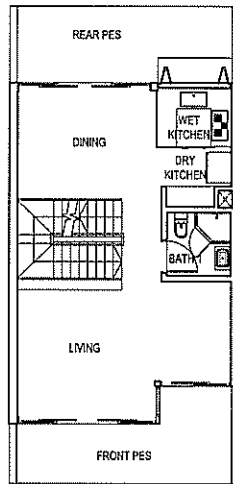
TYPE C1c(m)

UNIT NO - 154

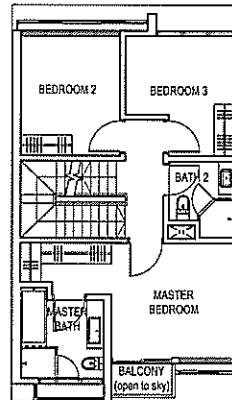
ANNEX B3



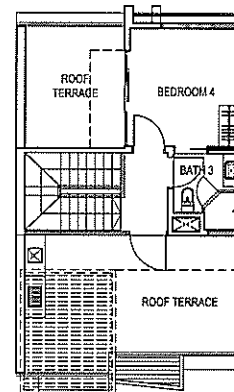
BASEMENT PLAN



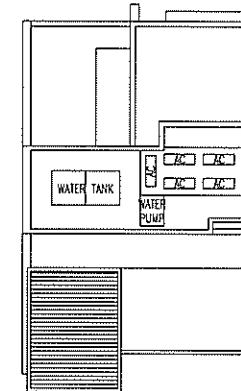
1ST STOREY PLAN



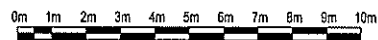
2ND STOREY PLAN



3RD STOREY PLAN



ROOF PLAN



BP NO: A0779-00018-2012-BP-01

APPROVED ON: 12 AUGUST 2013

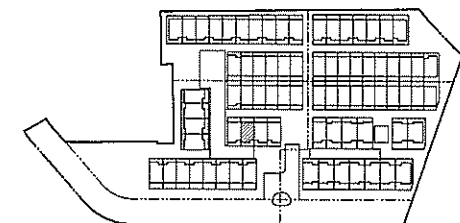
BP NO: A0779-00018-2012-BP-02

APPROVED ON: 21 AUGUST 2013

BP NO: A0779-00018-2012-BP-03

APPROVED ON: 20 MARCH 2015

DISCLAIMER: THE ABOVE PLANS ARE SUBJECT TO CHANGE AS MAY BE APPROVED BY THE RELEVANT AUTHORITIES



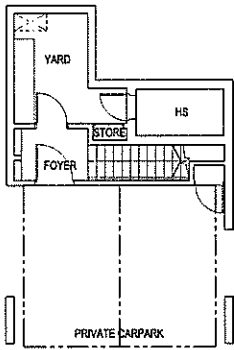
KEY PLAN
NOT TO SCALE

Alana

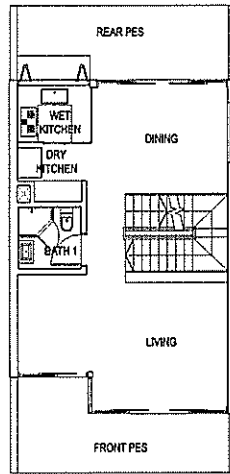
TYPE C2h

UNIT NO - 158

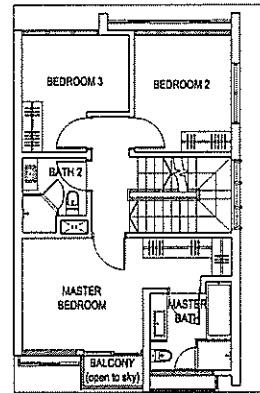
ANNEX B3



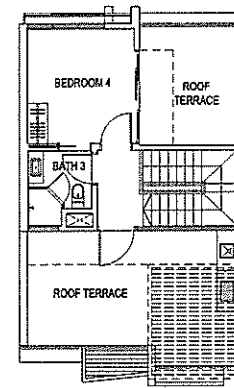
BASEMENT PLAN



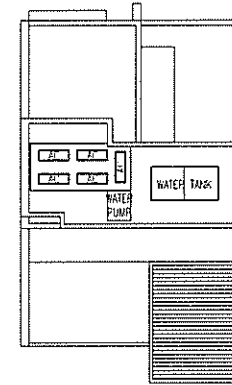
1ST STOREY PLAN



2ND STOREY PLAN



3RD STOREY PLAN



ROOF PLAN

MOHAN SHANIRUGAJI

RDC
ARCHITECTS
PTE LTD

152 BEACH ROAD, #14-08 GATEWAY EAST SINGAPORE 189721
E-MAIL: ARCHITECTS@RDCA.COM.SG WEBSITE: WWW.RDCA.COM.SG
TEL: 627 856 78 FAX: 627 677 27



BP NO: A0779-00018-2012-BP-01

BP NO: A0779-00018-2012-BP-02

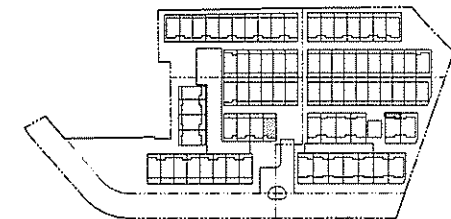
BP NO: A0779-00018-2012-BP-03

DISCLAIMER: THE ABOVE PLANS ARE SUBJECT TO CHANGE AS MAY BE APPROVED BY THE RELEVANT AUTHORITIES

APPROVED ON: 12 AUGUST 2013

APPROVED ON: 21 AUGUST 2013

APPROVED ON: 20 MARCH 2015



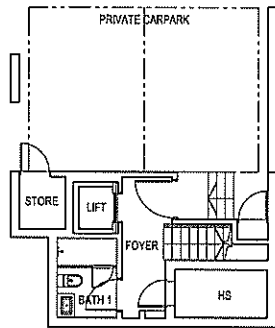
KEY PLAN
NOT TO SCALE

Alana

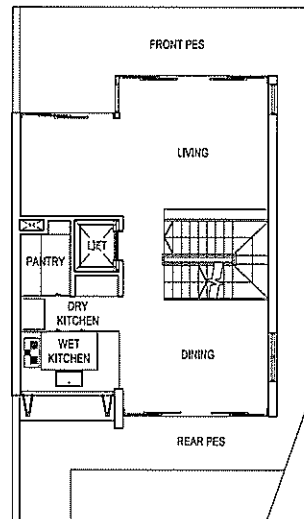
ANNEX B3

TYPE B3

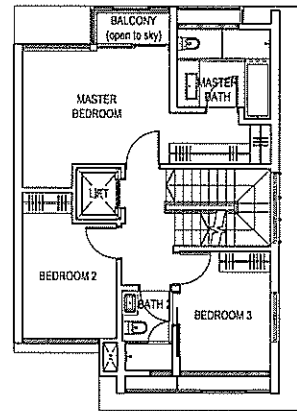
UNIT NO - 172



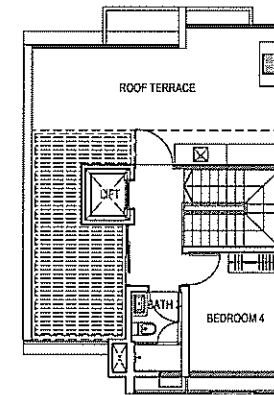
BASEMENT PLAN



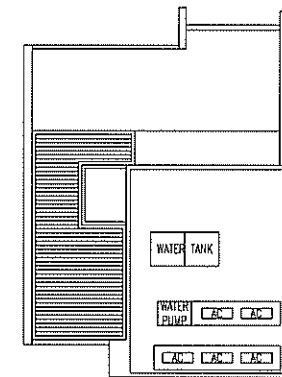
1ST STOREY PLAN



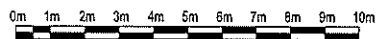
2ND STOREY PLAN



3RD STOREY PLAN



ROOF PLAN



BP NO: A0779-00018-2012-BP-01

APPROVED ON: 12 AUGUST 2013

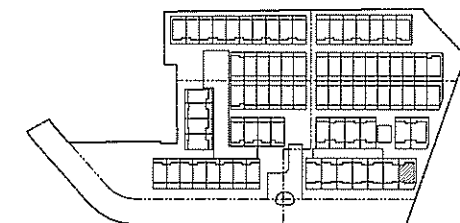
BP NO: A0779-00018-2012-BP-02

APPROVED ON: 21 AUGUST 2013

BP NO: A0779-00018-2012-BP-03

APPROVED ON: 20 MARCH 2015

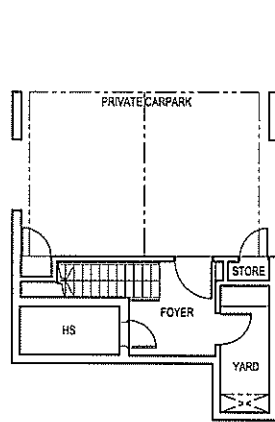
DISCLAIMER: THE ABOVE PLANS ARE SUBJECT TO CHANGE AS MAY BE APPROVED BY THE RELEVANT AUTHORITIES



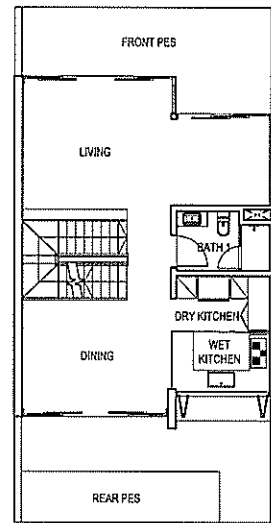
KEY PLAN
NOT TO SCALE

TYPE A1e(m)

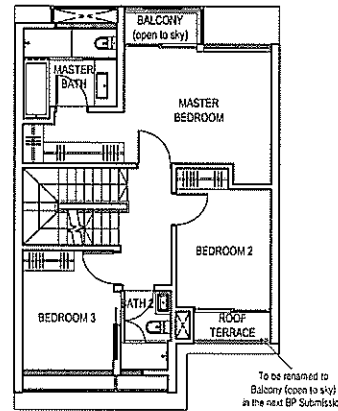
UNIT NO - 174



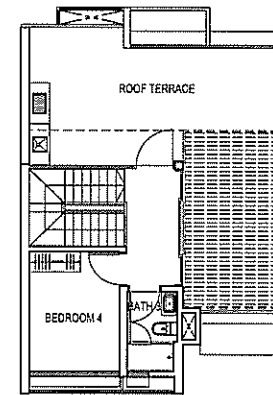
BASEMENT PLAN



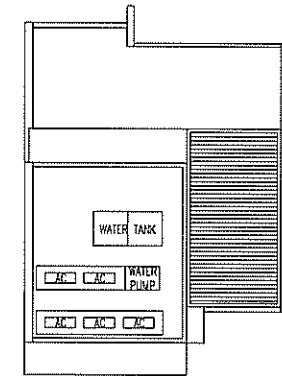
1ST STOREY PLAN



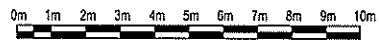
2ND STOREY PLAN



3RD STOREY PLAN



ROOF PLAN



BP NO: A0779-00018-2012-BP-01

APPROVED ON: 12 AUGUST 2013

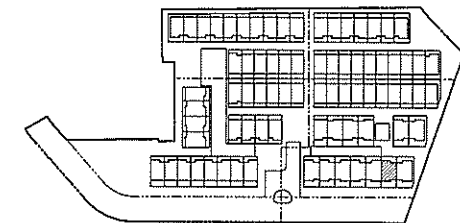
BP NO: A0779-00018-2012-BP-02

APPROVED ON: 21 AUGUST 2013

BP NO: A0779-00018-2012-BP-03

APPROVED ON: 20 MARCH 2015

DISCLAIMER: THE ABOVE PLANS ARE SUBJECT TO CHANGE AS MAY BE APPROVED BY THE RELEVANT AUTHORITIES



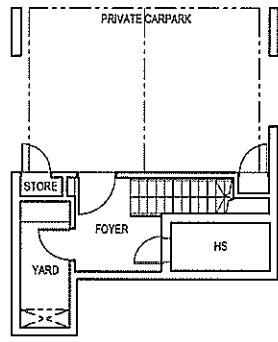
KEY PLAN
NOT TO SCALE

Alana

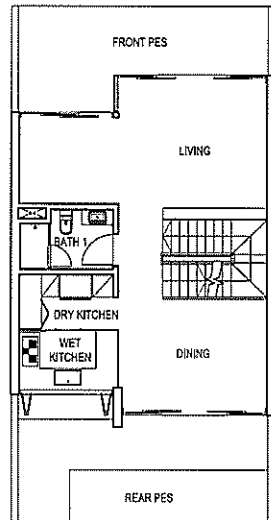
TYPE A1d

UNIT NO - 176

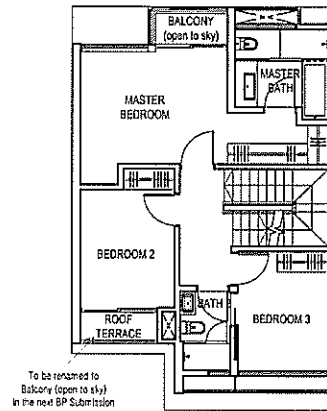
ANNEX B3



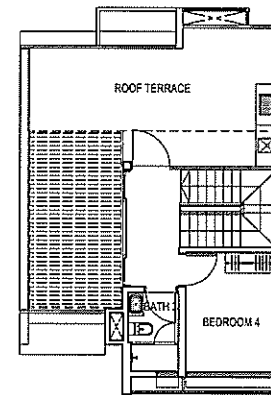
BASEMENT PLAN



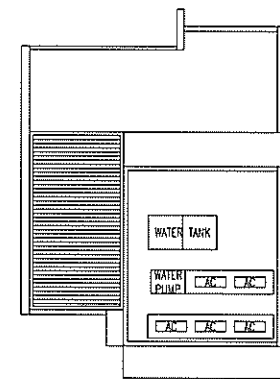
1ST STOREY PLAN



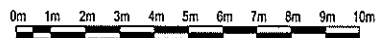
2ND STOREY PLAN



3RD STOREY PLAN



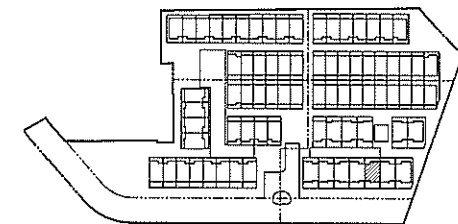
ROOF PLAN



BP NO: A0779-00018-2012-BP-01
 BP NO: A0779-00018-2012-BP-02
 BP NO: A0779-00018-2012-BP-03

APPROVED ON: 12 AUGUST 2013
 APPROVED ON: 21 AUGUST 2013
 APPROVED ON: 20 MARCH 2015

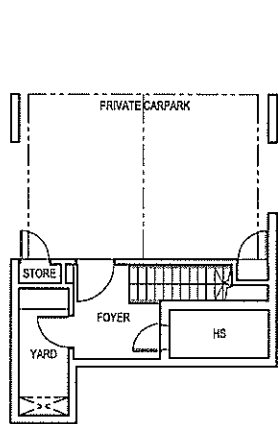
DISCLAIMER: THE ABOVE PLANS ARE SUBJECT TO CHANGE AS MAY BE APPROVED BY THE RELEVANT AUTHORITIES



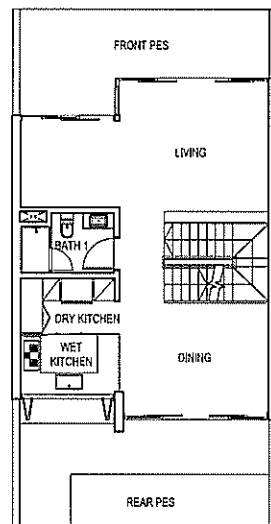
KEY PLAN
 NOT TO SCALE

TYPE A1d

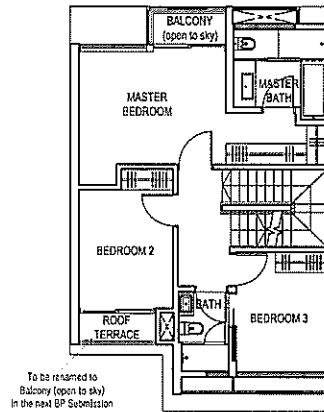
UNIT NO - 180



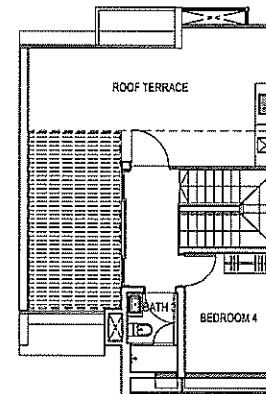
BASEMENT PLAN



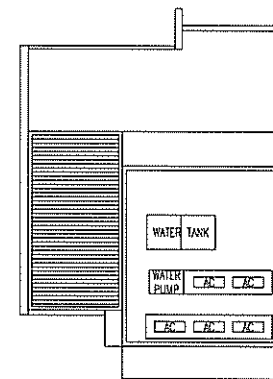
1ST STOREY PLAN



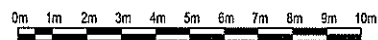
2ND STOREY PLAN



3RD STOREY PLAN



ROOF PLAN



BP NO: A0779-00018-2012-BP-01

APPROVED ON: 12 AUGUST 2013

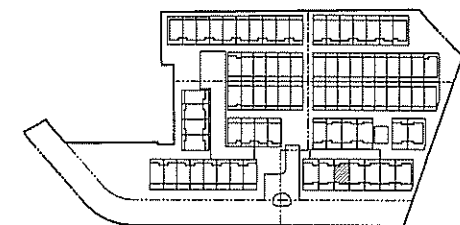
BP NO: A0779-00018-2012-BP-02

APPROVED ON: 21 AUGUST 2013

BP NO: A0779-00018-2012-BP-03

APPROVED ON: 20 MARCH 2015

DISCLAIMER: THE ABOVE PLANS ARE SUBJECT TO CHANGE AS MAY BE APPROVED BY THE RELEVANT AUTHORITIES

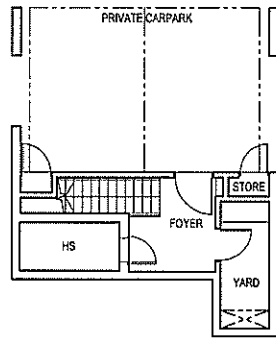


KEY PLAN
NOT TO SCALE

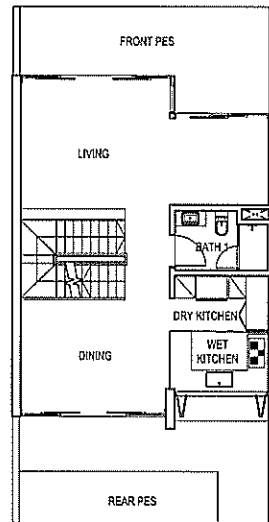
Alana

TYPE A1d(m)
UNIT NO - 182

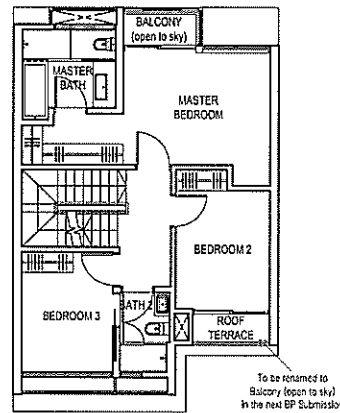
ANNEX B3



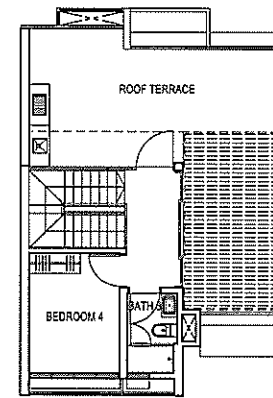
BASEMENT PLAN



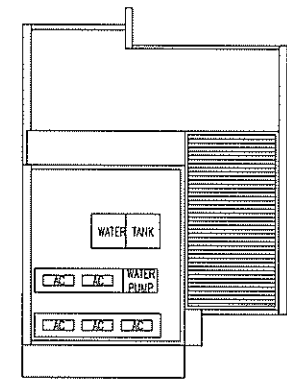
1ST STOREY PLAN



2ND STOREY PLAN



3RD STOREY PLAN



ROOF PLAN



BP NO: A0779-00018-2012-BP-01

BP NO: A0779-00018-2012-BP-02

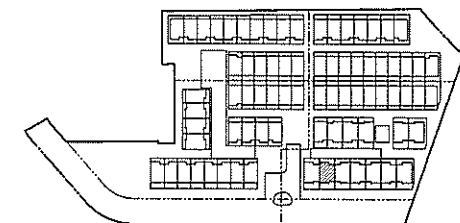
BP NO: A0779-00018-2012-BP-03

APPROVED ON: 12 AUGUST 2013

APPROVED ON: 21 AUGUST 2013

APPROVED ON: 20 MARCH 2015

DISCLAIMER: THE ABOVE PLANS ARE SUBJECT TO CHANGE AS MAY BE APPROVED BY THE RELEVANT AUTHORITIES



KEY PLAN
NOT TO SCALE