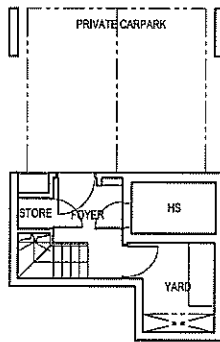


Alana

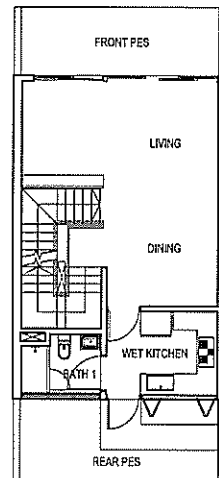
ANNEX B3

TYPE D1

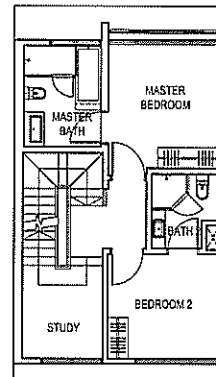
UNIT NO - 108



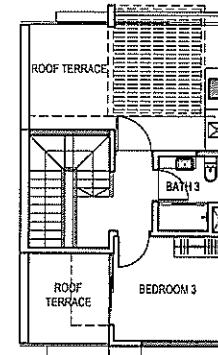
BASEMENT PLAN



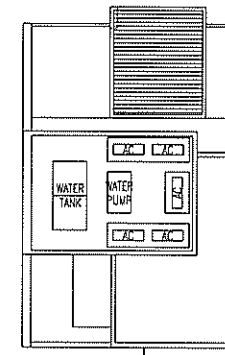
1ST STOREY PLAN



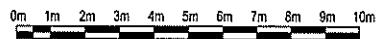
2ND STOREY PLAN



3RD STOREY PLAN



ROOF PLAN



BP NO: A0779-00018-2012-BP-01

BP NO: A0779-00018-2012-BP-02

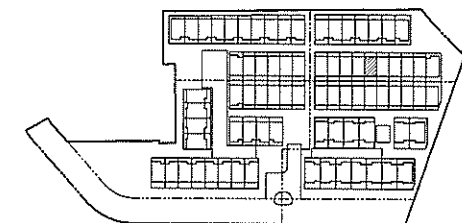
BP NO: A0779-00018-2012-BP-03

DISCLAIMER: THE ABOVE PLANS ARE SUBJECT TO CHANGE AS MAY BE APPROVED BY THE RELEVANT AUTHORITIES

APPROVED ON: 12 AUGUST 2013

APPROVED ON: 21 AUGUST 2013

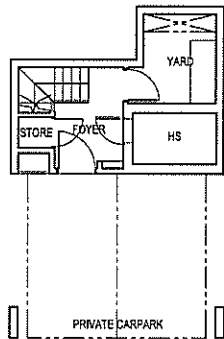
APPROVED ON: 20 MARCH 2015



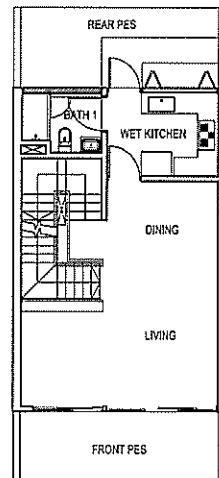
KEY PLAN
NOT TO SCALE

TYPE D1(m)

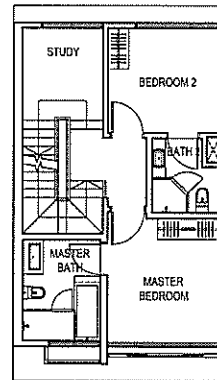
UNIT NO - 128



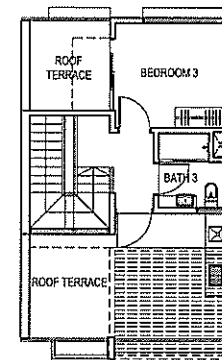
BASEMENT PLAN



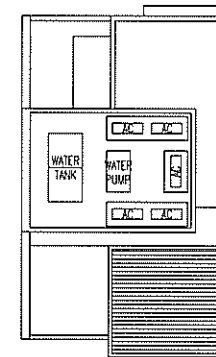
1ST STOREY PLAN



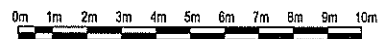
2ND STOREY PLAN



3RD STOREY PLAN



ROOF PLAN



BP NO: A0779-00018-2012-BP-01

BP NO: A0779-00018-2012-BP-02

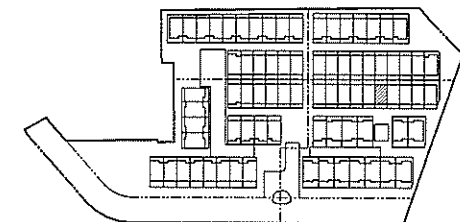
BP NO: A0779-00018-2012-BP-03

DISCLAIMER: THE ABOVE PLANS ARE SUBJECT TO CHANGE AS MAY BE APPROVED BY THE RELEVANT AUTHORITIES

APPROVED ON: 12 AUGUST 2013

APPROVED ON: 21 AUGUST 2013

APPROVED ON: 20 MARCH 2015



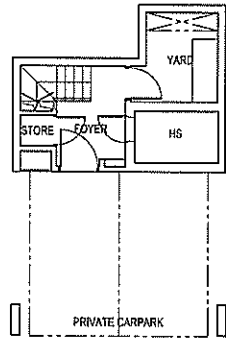
KEY PLAN
NOT TO SCALE

Alana

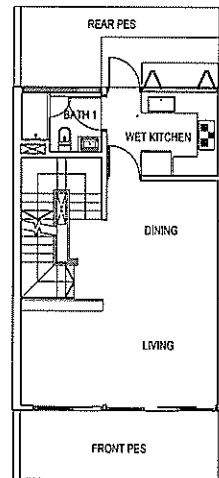
ANNEX B3

TYPE D2(m)

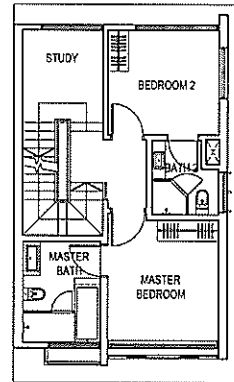
UNIT NO - 140



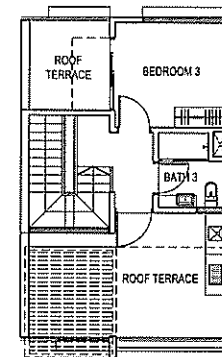
BASEMENT PLAN



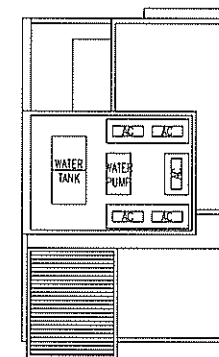
1ST STOREY PLAN



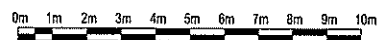
2ND STOREY PLAN



3RD STOREY PLAN



ROOF PLAN



BP NO: A0779-00018-2012-BP-01

BP NO: A0779-00018-2012-BP-02

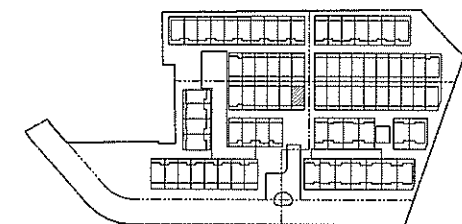
BP NO: A0779-00018-2012-BP-03

DISCLAIMER: THE ABOVE PLANS ARE SUBJECT TO CHANGE AS MAY BE APPROVED BY THE RELEVANT AUTHORITIES

APPROVED ON: 12 AUGUST 2013

APPROVED ON: 21 AUGUST 2013

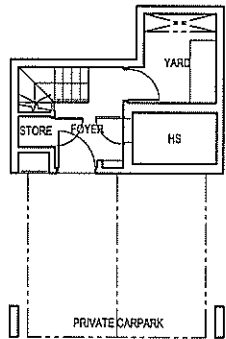
APPROVED ON: 20 MARCH 2015



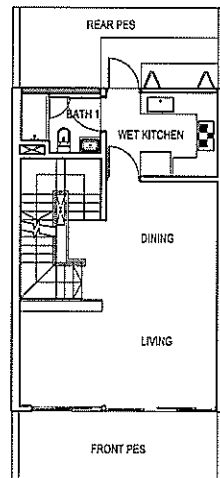
KEY PLAN
NOT TO SCALE

TYPE D1(m)

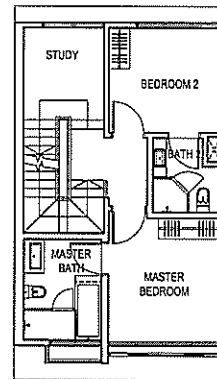
UNIT NO - 144



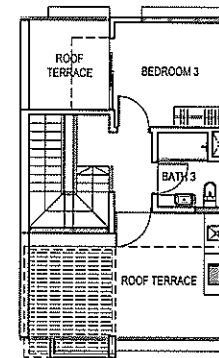
BASEMENT PLAN



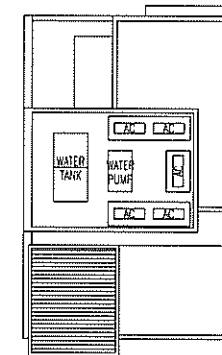
1ST STOREY PLAN



2ND STOREY PLAN



3RD STOREY PLAN



ROOF PLAN



BP NO: A0779-00018-2012-BP-01

BP NO: A0779-00018-2012-BP-02

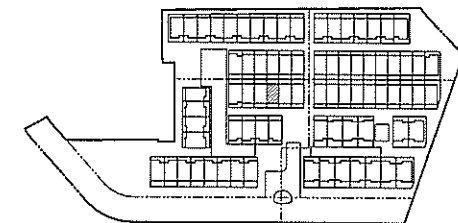
BP NO: A0779-00018-2012-BP-03

DISCLAIMER: THE ABOVE PLANS ARE SUBJECT TO CHANGE AS MAY BE APPROVED BY THE RELEVANT AUTHORITIES

APPROVED ON: 12 AUGUST 2013

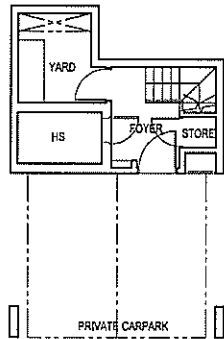
APPROVED ON: 21 AUGUST 2013

APPROVED ON: 20 MARCH 2015

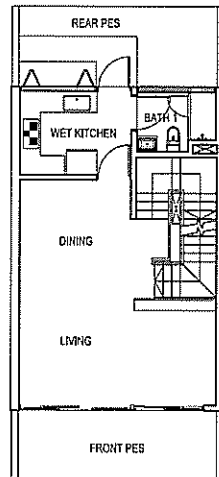


KEY PLAN
NOT TO SCALE

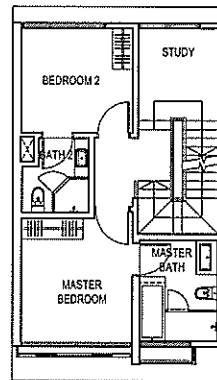
TYPE D1
UNIT NO - 146



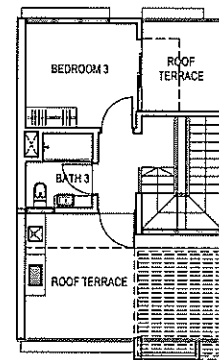
BASEMENT PLAN



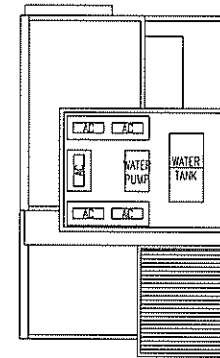
1ST STOREY PLAN



2ND STOREY PLAN



3RD STOREY PLAN



ROOF PLAN



BP NO: A0779-00018-2012-BP-01

BP NO: A0779-00018-2012-BP-02

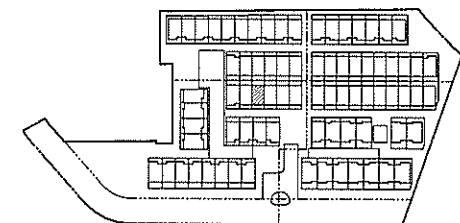
BP NO: A0779-00018-2012-BP-03

DISCLAIMER: THE ABOVE PLANS ARE SUBJECT TO CHANGE AS MAY BE APPROVED BY THE RELEVANT AUTHORITIES

APPROVED ON: 12 AUGUST 2013

APPROVED ON: 21 AUGUST 2013

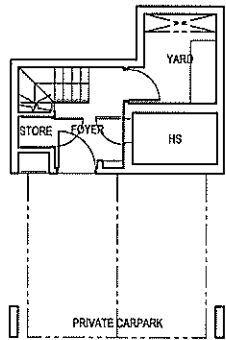
APPROVED ON: 20 MARCH 2015



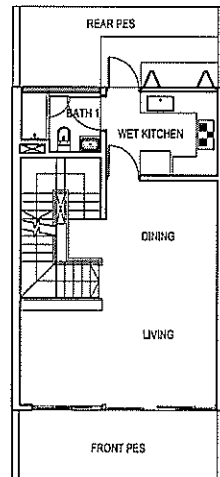
KEY PLAN
NOT TO SCALE

TYPE D1(m)

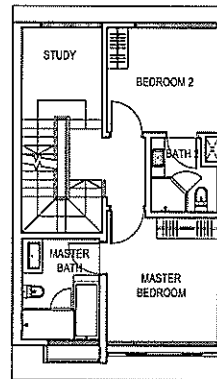
UNIT NO - 148



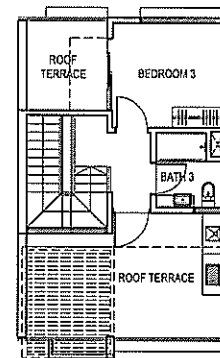
BASEMENT PLAN



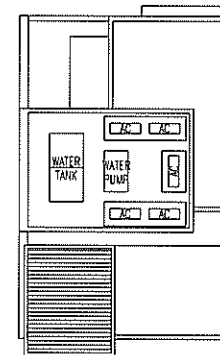
1ST STOREY PLAN



2ND STOREY PLAN



3RD STOREY PLAN



ROOF PLAN



BP NO: A0779-00018-2012-BP-01

BP NO: A0779-00018-2012-BP-02

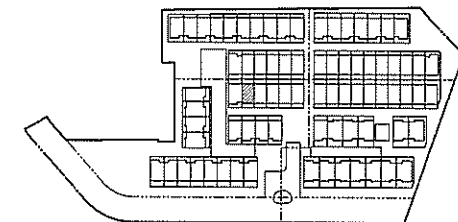
BP NO: A0779-00018-2012-BP-03

DISCLAIMER: THE ABOVE PLANS ARE SUBJECT TO CHANGE AS MAY BE APPROVED BY THE RELEVANT AUTHORITIES

APPROVED ON: 12 AUGUST 2013

APPROVED ON: 21 AUGUST 2013

APPROVED ON: 20 MARCH 2015



KEY PLAN
NOT TO SCALE